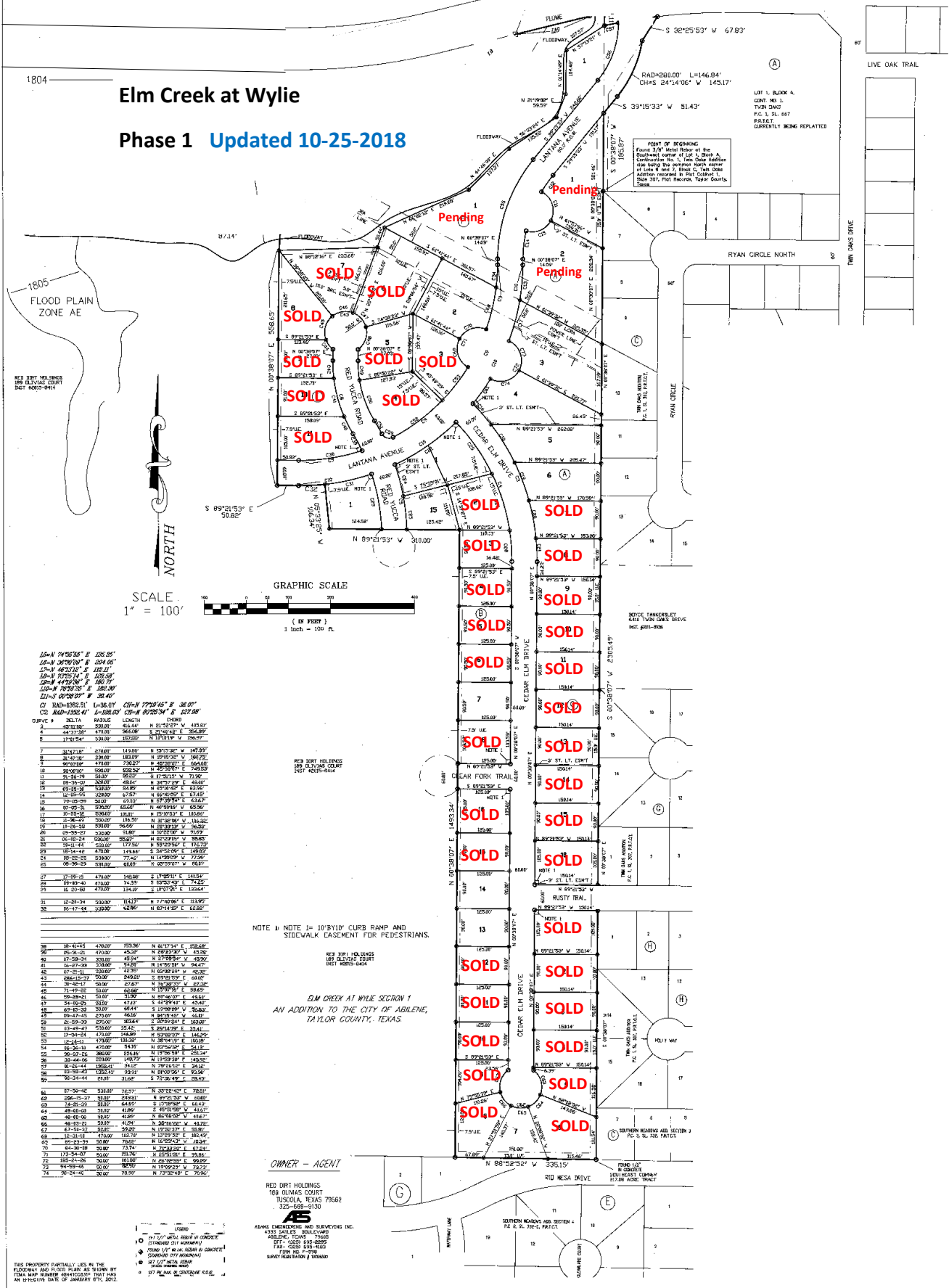


Wylie High School

Antilley Road

Elm Creek at Wylie  
Phase 1 Updated 10-25-2018



126-N 04°58'58" E 126.85'  
126-N 08°20'18" E 104.05'  
126-N 48°12'12" E 112.11'  
126-N 07°52'14" E 126.58'  
126-N 44°12'38" E 180.71'  
126-N 07°58'27" E 182.99'  
126-S 00°28'07" E 33.40'

CD: 180-1802.01 L=36.07' CH=N 77°04' E 36.07'  
126: 860-1805.41 L=102.07' CH=N 80°28' E 102.07'

CURVE #	DELTA	RADIUS	LENGTH	CHORD
1	44°37'36"	471.81	364.38	N 21°46'42" E 366.89'
2	174°04'	531.81	122.89	N 17°01'19" E 126.97'
3	31°47'47"	278.81	163.89	N 59°32'28" E 147.93'
4	38°30'36"	338.81	183.89	N 55°01'51" E 160.72'
5	50°07'58"	471.81	232.27	N 48°08'27" E 244.65'
6	30°06'00"	506.07	252.32	N 52°09'51" E 248.93'
7	51°34'29"	382.07	222.27	N 47°11'17" E 213.92'
8	191°51'30"	308.07	49.67	N 34°07'51" E 44.60'
9	67°31'36"	532.35	34.89	N 45°48'42" E 33.94'
10	14°32'35"	1215.17	87.57	N 46°19'41" E 87.56'
11	77°03'29"	303.27	63.13	N 57°39'24" E 63.27'
12	41°02'35"	330.07	65.07	N 46°19'41" E 65.06'
13	10°55'28"	506.83	10.81	N 25°03'12" E 10.80'
14	11°28'42"	320.27	16.79	N 34°38'36" E 16.80'
15	11°12'55"	333.81	16.69	N 33°03'51" E 16.70'
16	09°58'27"	532.07	7.89	N 32°02'10" E 7.93'
17	09°16'24"	536.07	35.67	N 32°02'10" E 35.69'
18	19°11'41"	536.07	117.50	N 32°02'10" E 117.52'
19	18°14'12"	476.07	124.64	N 32°02'10" E 124.67'
20	08°52'25"	538.93	77.44	N 14°39'50" E 77.50'
21	08°39'29"	538.93	63.67	N 08°00'11" E 63.67'
22	17°26'01"	474.07	148.08	N 17°09'11" E 148.14'
23	08°39'40"	474.07	74.33	N 12°37'43" E 74.25'
24	16°32'30"	474.07	134.19	N 16°17'21" E 134.64'
25	18°28'34"	532.07	114.37	N 17°40'26" E 114.97'
26	16°17'44"	538.93	142.86	N 16°17'44" E 142.88'
27	18°42'52"	476.07	155.36	N 18°17'11" E 155.40'
28	05°31'21"	470.07	45.27	N 18°27'37" E 45.26'
29	16°57'29"	538.93	91.91	N 14°56'51" E 94.27'
30	07°21'41"	536.07	41.29	N 03°02'50" E 40.30'
31	286°42'27"	536.07	41.29	N 89°02'50" E 40.30'
32	31°46'17"	501.07	67.67	N 36°28'17" E 67.20'
33	71°49'22"	541.07	62.66	N 57°07'51" E 62.65'
34	58°28'21"	501.07	32.97	N 57°46'27" E 48.44'
35	34°19'29"	474.07	41.77	N 57°07'51" E 41.77'
36	63°15'39"	501.07	64.44	N 13°09'59" E 64.84'
37	59°43'45"	474.07	25.74	N 13°09'59" E 25.74'
38	21°59'33"	670.07	303.44	N 59°25'24" E 303.87'
39	11°41'41"	670.07	148.29	N 59°25'24" E 148.29'
40	17°34'24"	474.07	148.89	N 17°34'24" E 148.89'
41	12°41'31"	474.07	44.15	N 12°41'31" E 44.15'
42	36°36'18"	470.07	44.15	N 12°41'31" E 44.15'
43	36°57'25"	380.07	124.48	N 17°30'50" E 124.34'
44	61°44'44"	330.07	167.79	N 17°30'50" E 167.79'
45	18°35'14"	330.07	34.12	N 17°30'50" E 34.12'
46	12°35'44"	330.07	23.92	N 09°03'51" E 24.04'
47	06°24'44"	474.07	31.68	N 12°35'44" E 31.68'
48	87°30'46"	538.93	76.77	N 33°04'42" E 78.91'
49	58°14'29"	474.07	25.74	N 33°04'42" E 25.74'
50	24°21'29"	474.07	64.89	N 13°09'59" E 64.89'
51	48°48'08"	518.07	41.89	N 30°03'51" E 41.87'
52	48°48'08"	518.07	41.89	N 30°03'51" E 41.87'
53	48°48'08"	518.07	41.89	N 30°03'51" E 41.87'
54	48°48'08"	518.07	41.89	N 30°03'51" E 41.87'
55	48°48'08"	518.07	41.89	N 30°03'51" E 41.87'
56	48°48'08"	518.07	41.89	N 30°03'51" E 41.87'
57	48°48'08"	518.07	41.89	N 30°03'51" E 41.87'
58	48°48'08"	518.07	41.89	N 30°03'51" E 41.87'
59	48°48'08"	518.07	41.89	N 30°03'51" E 41.87'
60	48°48'08"	518.07	41.89	N 30°03'51" E 41.87'
61	48°48'08"	518.07	41.89	N 30°03'51" E 41.87'
62	48°48'08"	518.07	41.89	N 30°03'51" E 41.87'
63	48°48'08"	518.07	41.89	N 30°03'51" E 41.87'
64	48°48'08"	518.07	41.89	N 30°03'51" E 41.87'
65	48°48'08"	518.07	41.89	N 30°03'51" E 41.87'
66	48°48'08"	518.07	41.89	N 30°03'51" E 41.87'
67	48°48'08"	518.07	41.89	N 30°03'51" E 41.87'
68	48°48'08"	518.07	41.89	N 30°03'51" E 41.87'
69	48°48'08"	518.07	41.89	N 30°03'51" E 41.87'
70	48°48'08"	518.07	41.89	N 30°03'51" E 41.87'
71	48°48'08"	518.07	41.89	N 30°03'51" E 41.87'
72	48°48'08"	518.07	41.89	N 30°03'51" E 41.87'
73	48°48'08"	518.07	41.89	N 30°03'51" E 41.87'
74	48°48'08"	518.07	41.89	N 30°03'51" E 41.87'

NOTE: NOTE 1= 10'BY10' CURB RAMP AND STICKWALK CASHEMENT FOR PEDESTRIANS.

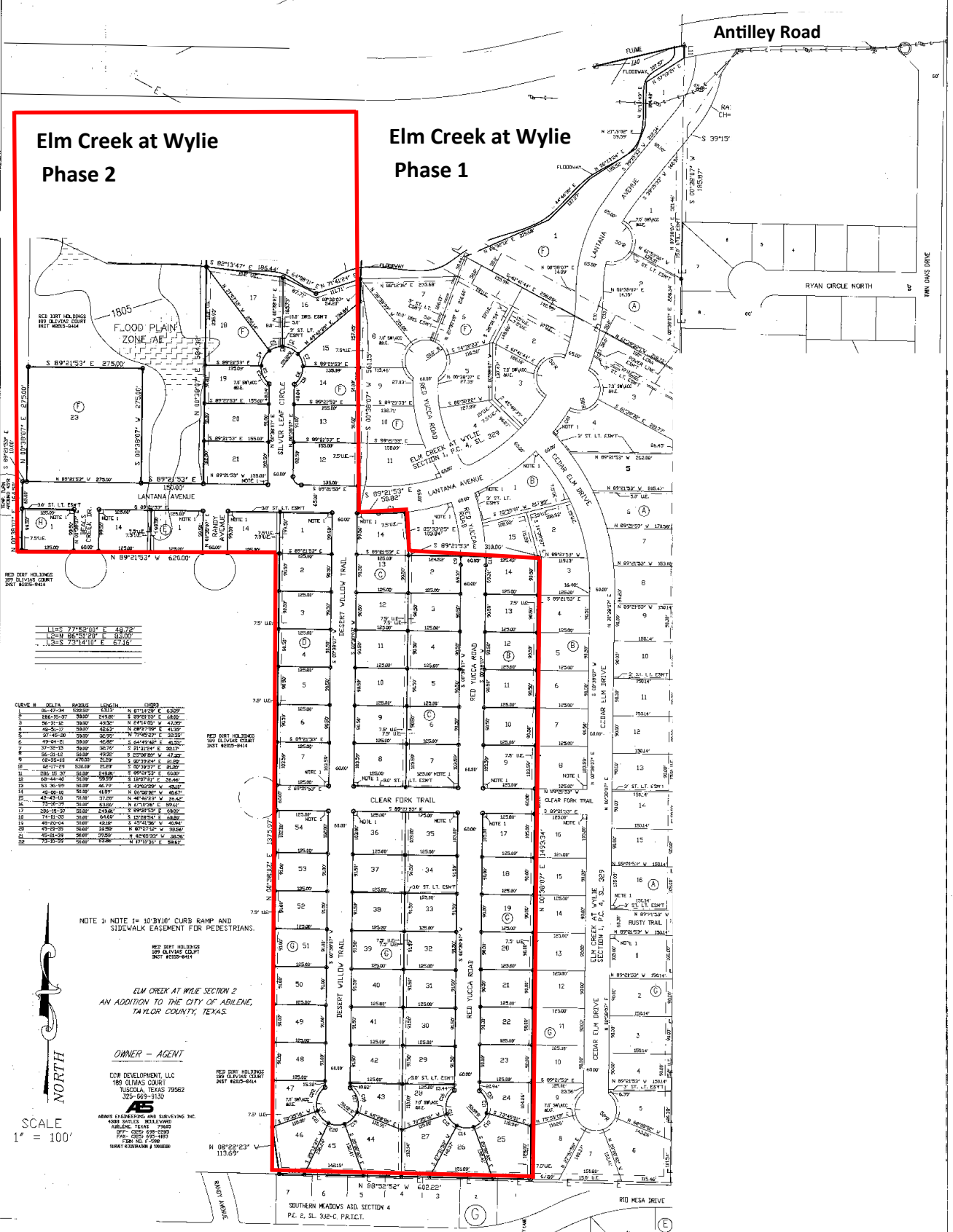
ELM CREEK AT WYLIE SECTION 1  
AN ADDITION TO THE CITY OF ABILENE,  
TAYLOR COUNTY, TEXAS

OWNER - AGENT

RED DIRT HOLDINGS  
169 OLMAS COURT  
TUSCOLA, TEXAS 75662  
325-688-6130

AS  
ASME CONSULTING AND SURVEYING INC.  
4333 LANTANA BULLEWARD  
ABILENE, TEXAS 79602  
TEL: (325) 695-8285  
FAX: (325) 695-8104  
FORM NO. 4-2008  
SHEET 1 OF 10 SHEETS

THIS PROPERTY PARTIALLY LIES IN THE FLOODPLAIN AND FLOOD PLAIN AS SHOWN BY FEMA MAP NUMBER 18041C0017 THAT HAS AN EFFECTIVE DATE OF JANUARY 8TH, 2011.



**Elm Creek at Wylie  
Phase 2**

**Elm Creek at Wylie  
Phase 1**

CURVE #	DELTA	RADIUS	LENGTH	CHORD
1	88°47'30"	111.17	118.74	118.74
2	88°47'30"	111.17	118.74	118.74
3	88°47'30"	111.17	118.74	118.74
4	88°47'30"	111.17	118.74	118.74
5	88°47'30"	111.17	118.74	118.74
6	88°47'30"	111.17	118.74	118.74
7	88°47'30"	111.17	118.74	118.74
8	88°47'30"	111.17	118.74	118.74
9	88°47'30"	111.17	118.74	118.74
10	88°47'30"	111.17	118.74	118.74
11	88°47'30"	111.17	118.74	118.74
12	88°47'30"	111.17	118.74	118.74
13	88°47'30"	111.17	118.74	118.74
14	88°47'30"	111.17	118.74	118.74
15	88°47'30"	111.17	118.74	118.74
16	88°47'30"	111.17	118.74	118.74
17	88°47'30"	111.17	118.74	118.74
18	88°47'30"	111.17	118.74	118.74
19	88°47'30"	111.17	118.74	118.74
20	88°47'30"	111.17	118.74	118.74
21	88°47'30"	111.17	118.74	118.74
22	88°47'30"	111.17	118.74	118.74
23	88°47'30"	111.17	118.74	118.74
24	88°47'30"	111.17	118.74	118.74
25	88°47'30"	111.17	118.74	118.74
26	88°47'30"	111.17	118.74	118.74
27	88°47'30"	111.17	118.74	118.74
28	88°47'30"	111.17	118.74	118.74
29	88°47'30"	111.17	118.74	118.74
30	88°47'30"	111.17	118.74	118.74

NOTE 1: NOTE 1 IN 10' MIN. CURB RAMP AND SIDEWALK EASEMENT FOR PEDESTRIANS.

ELM CREEK AT WYLIE SECTION 2  
AN ADDITION TO THE CITY OF ABILENE,  
TAYLOR COUNTY, TEXAS.

OWNER - AGENT  
COW DEVELOPMENT, LLC  
180 OLIVAS COURT  
MUSKOGEE, TEXAS 79902  
325-693-9100

AS  
ARMS ENGINEERING AND SURVEYING INC.  
4508 BARLES BELLEVUE  
MUSKOGEE, TEXAS 79902  
OFF: 325-645-1295  
FAX: 325-645-1296  
15847 ESTERHAGEN # 090088

SCALE  
1" = 100'

GRAPHIC SCALE  
(IN FEET)  
1 inch = 100 ft.

SURVEYORS NOTE  
NOTE: MEASUREMENTS AS SHOWN ON ABOVE PLAN HAVE NOT BEEN SET AS OF THIS DATE. MEASUREMENTS WILL BE SET WHEN CONSTRUCTION IS FINISHED.

Antilley Road

RYAN CIRCLE NORTH

SOUTHERN MEADOWS ADD. SECTION 4  
P.C. & S.L. 930-C PART 2.

RID MESA DRIVE

GRAPHIC SCALE  
(IN FEET)  
1 inch = 100 ft.